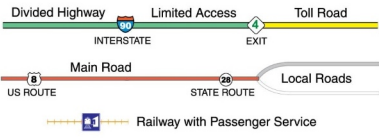


# Northern New Hampshire

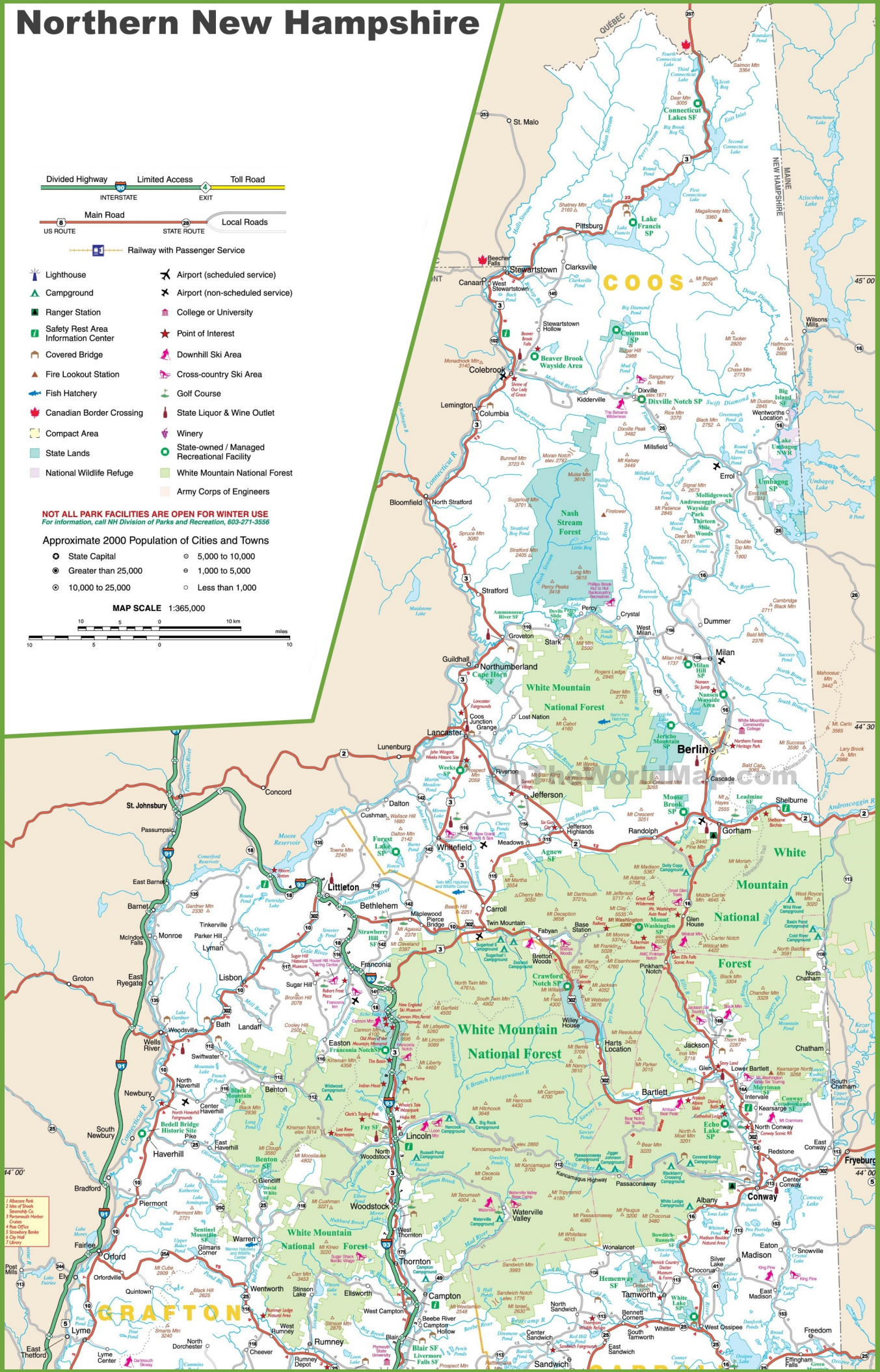


- Lighthouse
- Airport (scheduled service)
- Campground
- Airport (non-scheduled service)
- Ranger Station
- College or University
- Safety Rest Area
- Information Center
- Point of Interest
- Covered Bridge
- Downhill Ski Area
- Fire Lookout Station
- Cross-country Ski Area
- Fish Hatchery
- Golf Course
- Canadian Border Crossing
- Winery
- State-owned / Managed Recreational Facility
- Compact Area
- National Wildlife Refuge
- White Mountain National Forest
- Army Corps of Engineers

**NOT ALL PARK FACILITIES ARE OPEN FOR WINTER USE**  
 For information, call NH Division of Parks and Recreation, 603-271-3556

- Approximate 2000 Population of Cities and Towns**
- State Capital
  - 5,000 to 10,000
  - Greater than 25,000
  - 1,000 to 5,000
  - 10,000 to 25,000
  - Less than 1,000

MAP SCALE 1:365,000



- 1 Abasco Park
- 2 Lake Umbagog
- 3 Steamship Co.
- 4 Northwood Harbor
- 5 Cannon
- 6 Franconia
- 7 Strawberry Falls
- 8 City Hall
- 9 Lily